

# **SciAnalytical Strategies, Inc.**

*Pharma, Biotech and Clinical Analytical Testing and Consulting Services*

**505 Coast Boulevard South  
Suite 115  
La Jolla, CA 92037  
dkassel@scianalytical.com**

**Sample Report**

***Study Title***

**Sample Analysis by LC/UV/ELSD/MS**

**Customer: Pharmaceutical Company 1**

**CONFIDENTIAL**

# SciAnalytical Strategies, Inc.

Pharma, Biotech and Clinical Analytical Testing and Consulting Services

## Mass Spectrometry Conditions:

Waters ZQ 2000 Single Quadrupole Mass Spectrometer

Mass Range Scanned: 150-750 Da in 0.2 seconds

Unit resolution

Positive Ion Electrospray Ionization

## HPLC Conditions:

Shimadzu HPLC Pump Initial Conditions

A%: 90(Water - TFA)

B%: 10(ACN - TFA)

Flow (ml/min): 0.700

Stop Time (mins): 4.0

High Pressure (psi): 5000

Low Pressure (psi): 0

Temperature Limit (°C): 25

Shimadzu HPLC Pump Gradient Timetable

The gradient Timetable contains 5 entries which are :

Time:	MP-A%	MP-B%
1.00:	90	10
3.00:	5	95
3.20:	5	95
3.50:	90	10
4.00:	90	10

## ELSD Conditions:

Alltech 2000 Evaporative Light Scattering Detector

Nebulizer Gas Flow = 3 L/min

Drift Tube Temperature = 70C

Gain = 16

Sample Report

# SciAnalytical Strategies, Inc.

Pharma, Biotech and Clinical Analytical Testing and Consulting Services

## Openlynx Report -

Sample: 5  
File: OSSL\_571792 r5  
Description: OSSL\_571792

Vial: 20,50:D,1  
Date: 20-Oct-2014

ID:  
Time: 13:28:06

Page 1

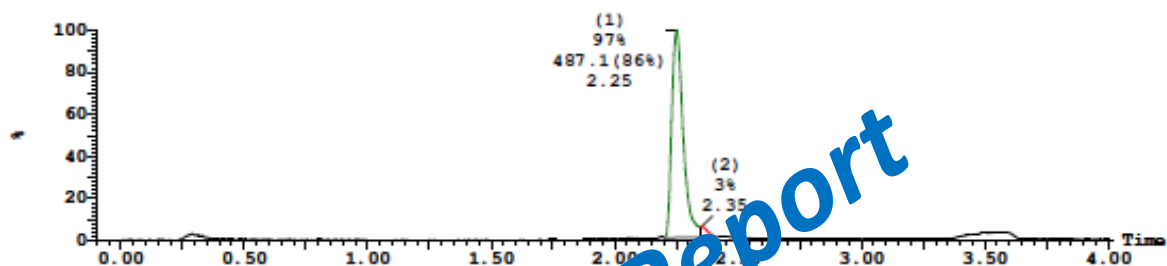
Printed: Mon Oct 20 13:32:29 2014

## Sample Report:

Sample 5 Vial 20,50:D,1 ID File OSSL\_571792 r5 Date 20-Oct-2014 Time 13:28:06 Description OSSL\_571792

1: MS ES+ :TIC Smooth (SG, 2x3)

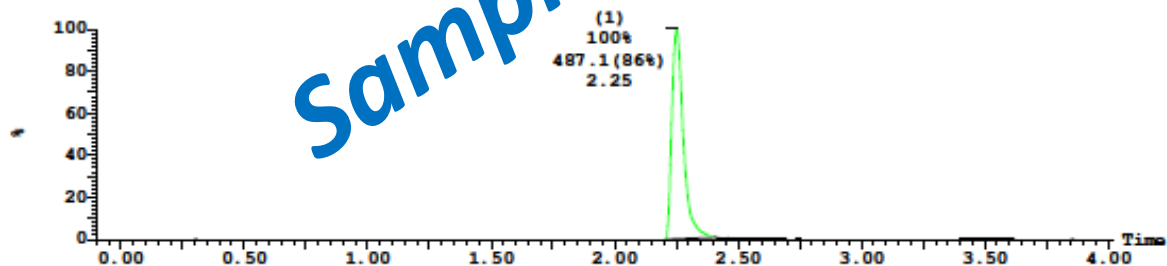
1.2e+008



Peak Number	Compound	Time	AreaAbs	Area %Total	Width	Height	Mass Found
1	Found	2.25	6e+006	96.96	0	1e+008	487.15
2		2.35	2e+005	3.0	0	6e+006	

1: MS ES+ :488.146 1.0000Da Smooth (SG, 2x3)

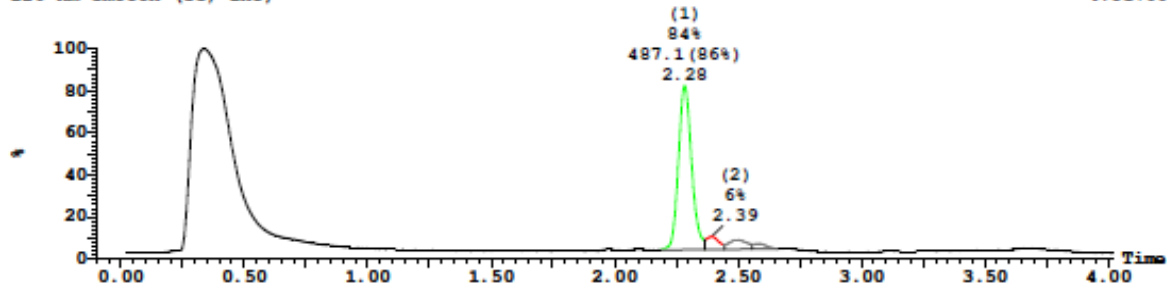
6.6e+007



Peak Number	Compound	Time	AreaAbs	Area %Total	Width	Height	Mass Found
1	Found	2.25	4e+006	100.00	0	7e+007	487.15

220 nm Smooth (SG, 2x3)

4.8e+005



Peak Number	Compound	Time	AreaAbs	Area %Total	Width	Height	Mass Found
1	Found	2.28	2e+004	84.34	0	4e+005	487.15
2		2.39	2e+003	6.29	0	3e+004	
3		2.50	2e+003	6.67	0	2e+004	
4		2.58	7e+002	2.71	0	1e+004	

Sample Report

# SciAnalytical Strategies, Inc.

Pharma, Biotech and Clinical Analytical Testing and Consulting Services

## Openlynx Report -

Page 2

Sample: 5  
File:OSSL\_571792\_r5  
Description:OSSL\_571792

Vial:20,50:D,1  
Date:20-Oct-2014

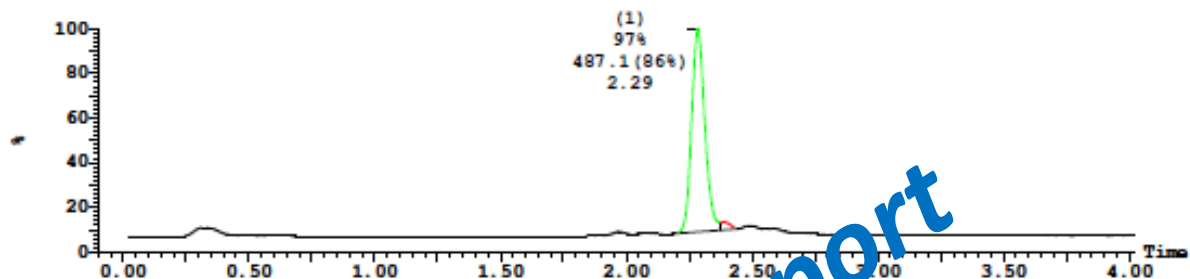
ID:  
Time:13:28:06

Printed: Mon Oct 20 13:32:29 2014

### Sample Report (continued):

254 nm Smooth (SG, 1x3)

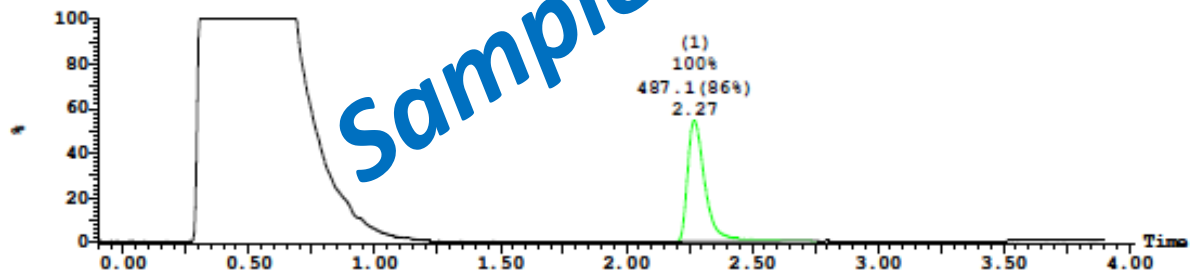
1.6e+005



Peak Number	Compound Found	Time	AreaAbs	Area %Total	Width	Height	Mass Found
1	Found	2.29	9e+003	97.49			487.15
2		2.39	2e+002	2.51			

ELSD Smooth (SG, 1x3)

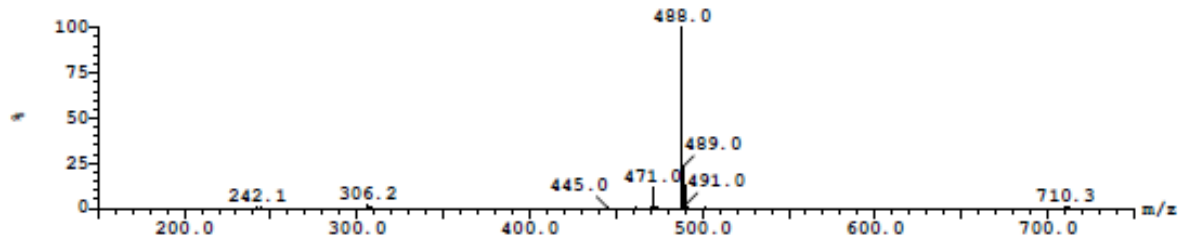
1.0e+006



Peak Number	Compound Found	Time	AreaAbs	Area %Total	Width	Height	Mass Found
1	Found	2.27	4e+004	100.00	1	5e+005	487.15

Peak ID	Compound Found	Time	Mass Found
1	Found	2.25	488.15

1:MS ES+  
2.7e+006



# SciAnalytical Strategies, Inc.

Pharma, Biotech and Clinical Analytical Testing and Consulting Services

Openlynx Report -

Page 3

Sample: 5  
File:OSSL\_571792 r5  
Description:OSSL\_571792

Vial:20,50:D,1  
Date:20-Oct-2014

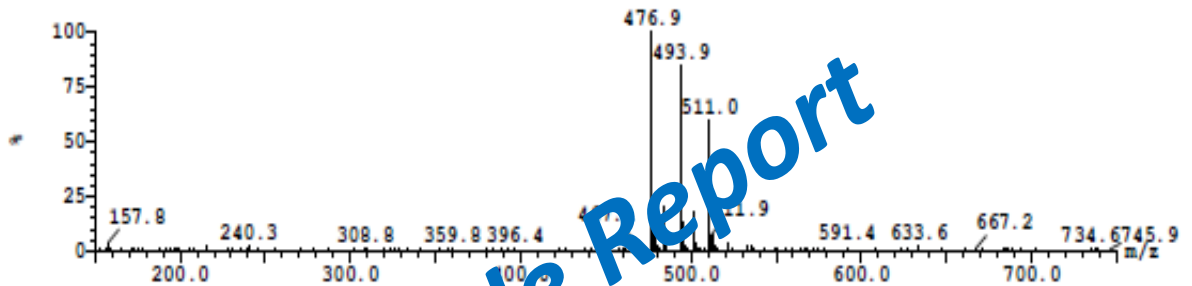
ID:  
Time:13:28:06

Printed: Mon Oct 20 13:32:29 2014

Sample Report (continued):

Peak ID	Compound	Time	Mass Found
2		2.35	

1:MS ES+  
2.8e+004



There appears to be an impurity in the sample at the 5-10% level (based on UV 220nm signal). It is on the right shoulder of the main peak, with a molecular weight shown above. This was confirmed by replicate injections (data not shown).

Sample Report